

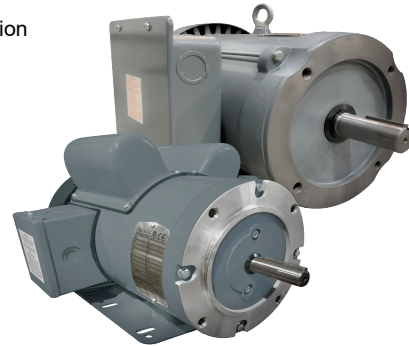


MaxMotion Farm Duty

GENERAL PURPOSE SINGLE PHASE MOTORS

- Ball bearings Mechanically locked on Shaft End
- Capacitor Start/Capacitor Run Design for Higher Torque and Efficiency
- Totally Enclosed and Fully Gasketed for Dirty Enviroments IP55 Protection
- Suitable for Horizontal and Vertical Operation
- Manual Overload on Models noted
- C-Face Installed, where noted
- Removable Base on frame 56
- Class F Insulation
- F1 Standard Assembly
- CSA Certified, CE Mark
- One Year Warranty

MaxMotion



Single Phase, Totally Enclosed (TEFC), Fan Cooled, Rigid Base

HP	RPM	Volts	Frame	Overload Protection	Shaft Diameter	Full Load Amps	Catalogue No.
1/3	1800	115/208-230	56C	manual	5/8"	3,92/2,17-1,96	MTR-134FDCH
1/2	1800	115/208-230	56C	manual	5/8"	5,7/3,15-2,85	MTR-124FDCH
3/4	1800	115/208-230	56C	manual	5/8"	7,33/4,05-3,66	MTR-344FDCH
1	1800	115/208-230	56C	manual	5/8"	9,09/5,02-4,54	MTR-104FDCH
1,5	1800	115/208-230	56HC	manual	5/8"	12,41/6,86-6,2	MTR-154FDCH
2	1800	115/208-230	145TC	manual	7/8"	16,17/8,94-8,08	MTR-204FDTCH
	1800	115/208-230	56HC	manual	5/8"	16,17/8,94-8,09	MTR-204FDCH
3	1800	208-230	182TC	manual	1-1/8"	12,5-11,3	MTR-304FDCH
5	1800	208-230	184TC	manual	1-1/8"	22,9-19,2	MTR-504FDCH
7.5	1800	208-230	215T	no overload	1-3/8"	33-28.10	MTR-754FDH *
10	1800	208-230	215T	no overload	1-3/8"	45.1-38.20	MTR-1004FDH *

*C Flange available, H 210TC-1